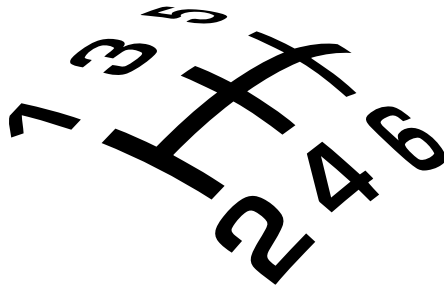


®



# SHORT-SHIFTERS.COM

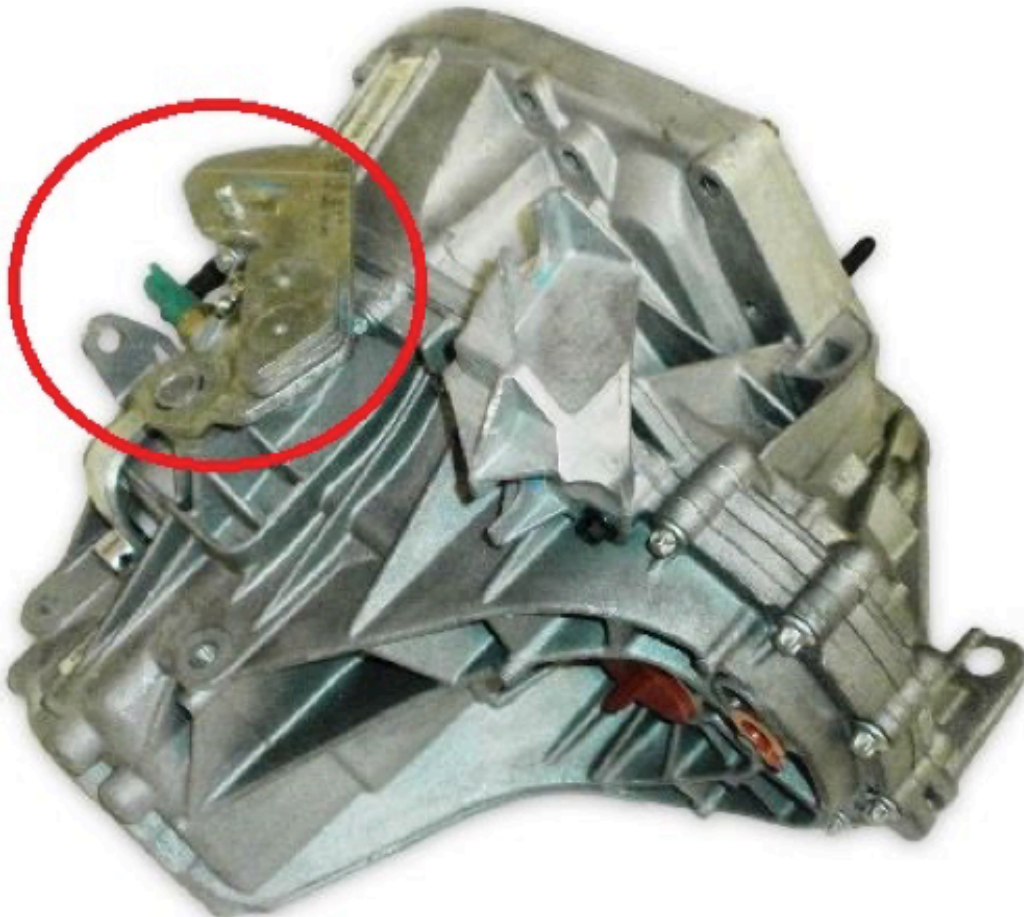
4H-TECH Short Shifters. **Power shifters for quicker and shorter gear changes**

Fitting instructions for 4H-TECH TL4-Shift Short Shifter.





Open the bonnet, and remove the air intake hose, air filter housing and battery .  
Unclip the front- and rear connectors from the battery tray.  
Unbolt the battery tray from the chassis.



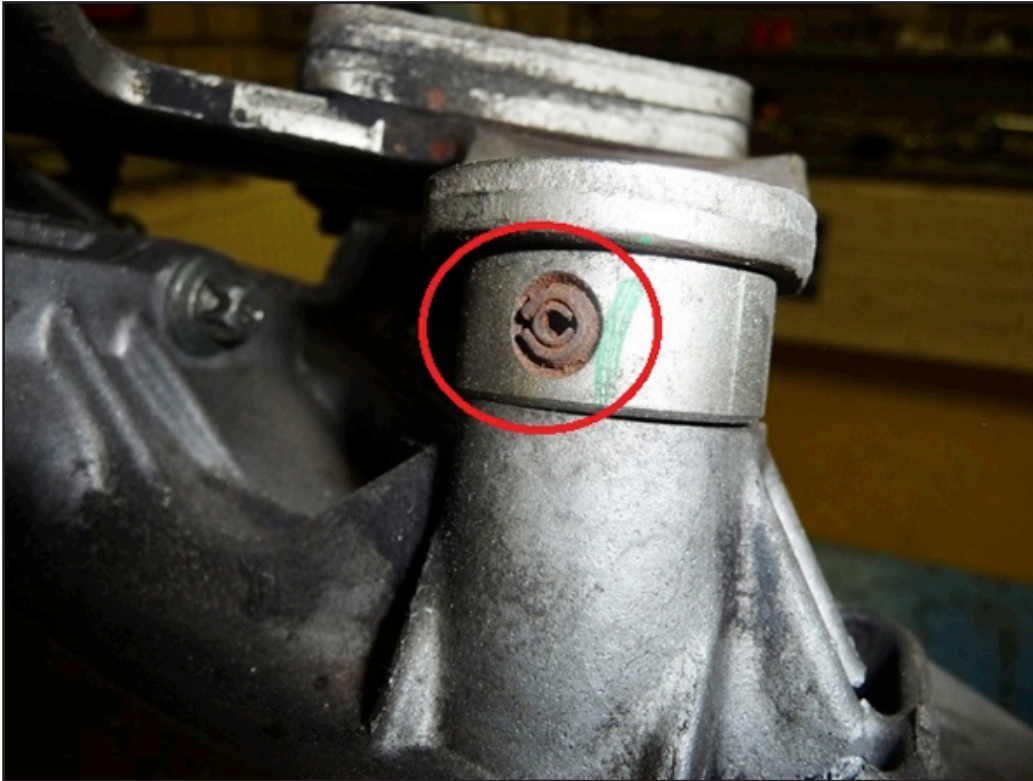


# SHORT-SHIFTERS.COM

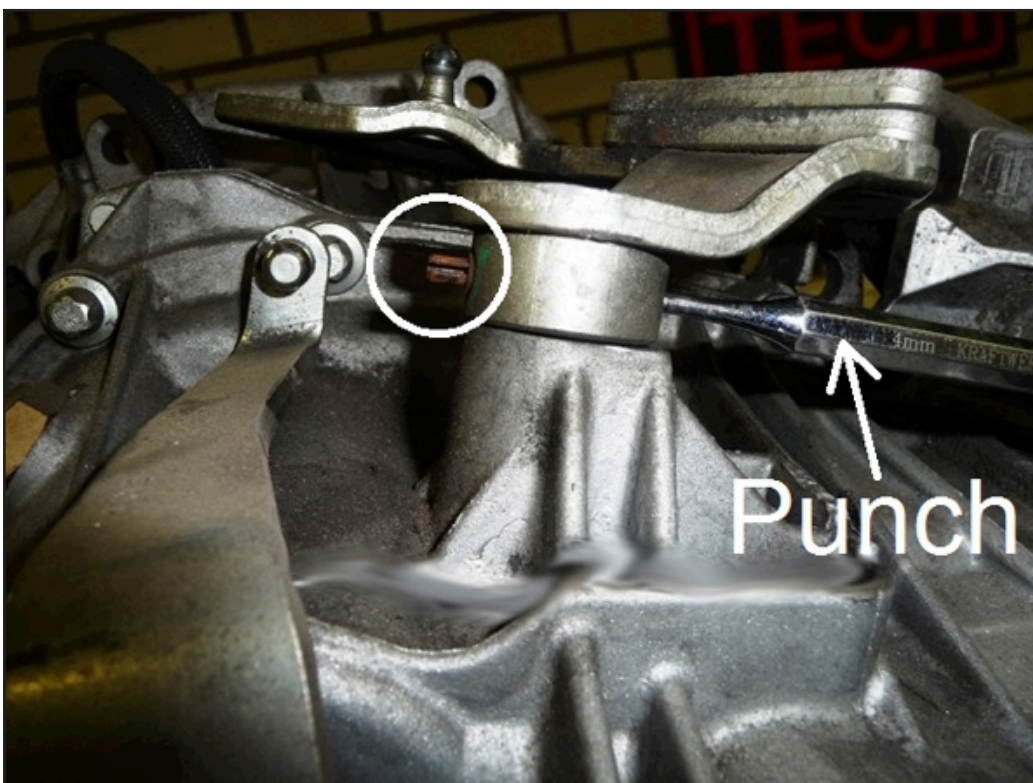
The following pictures are made from the gearbox removed from the car to make the fitting of the short shifter much more clearer to see:

Put the gear lever in neutral position and unclip the shift cable from the shifter arm with the use of a 13mm spanner.

The original shifter arm on top of the gearbox is secured on the shaft with a steel pin. This pin consist of two parts. A inner- and an outer part.



The inner pin must be removed first:





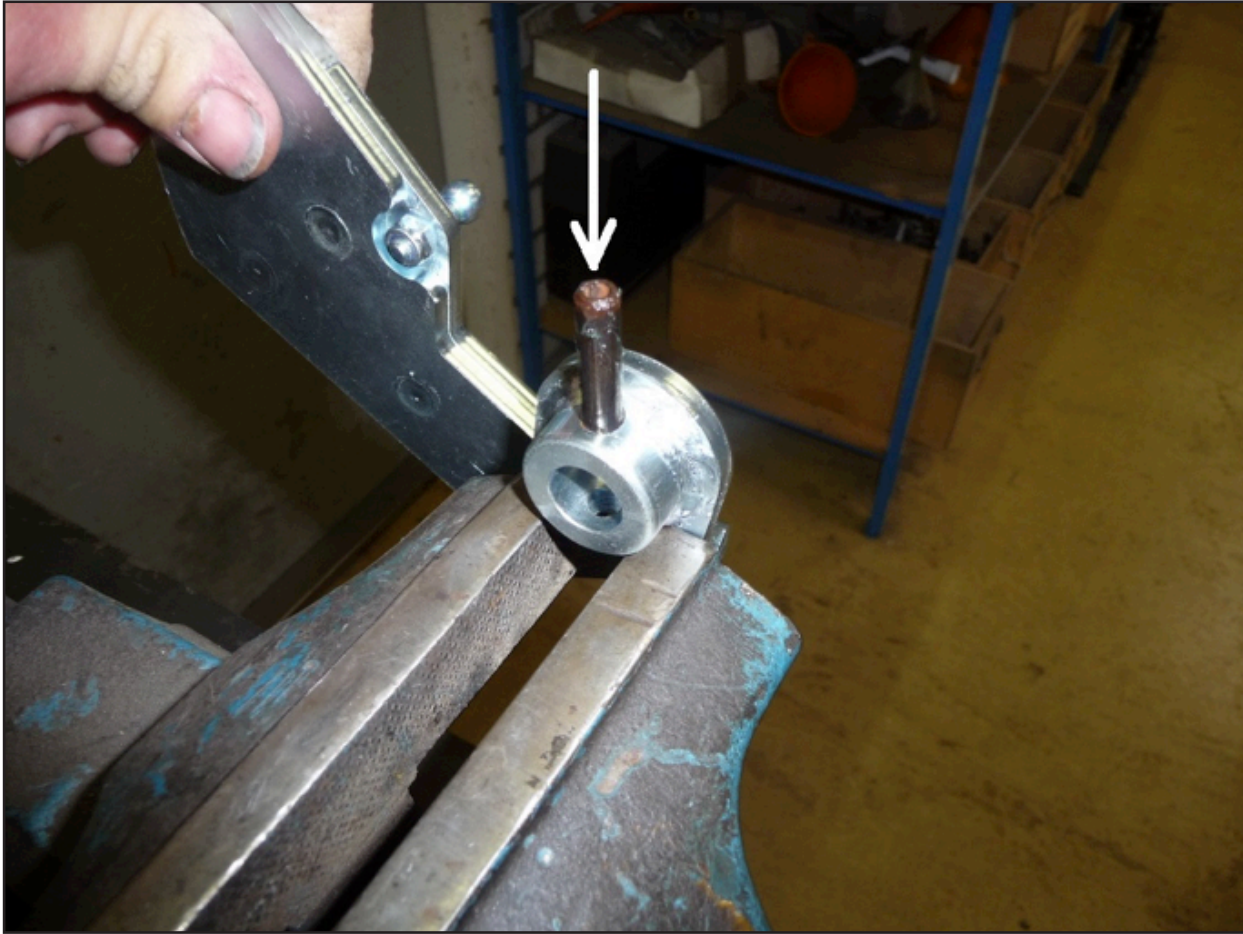
# SHORT-SHIFTERS.COM

Remove the outer pin with a bigger punch.

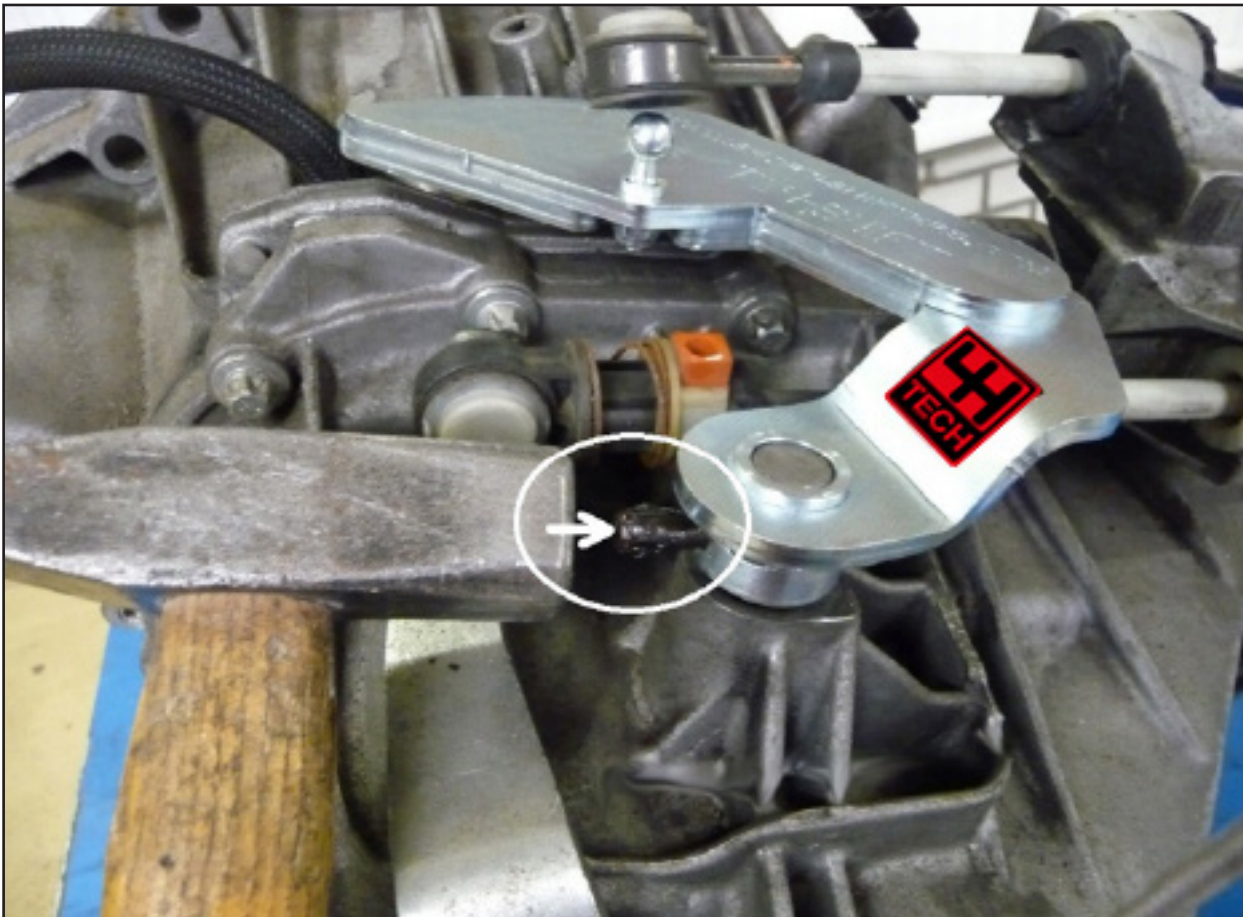


Remove the shifter arm from the transmission:





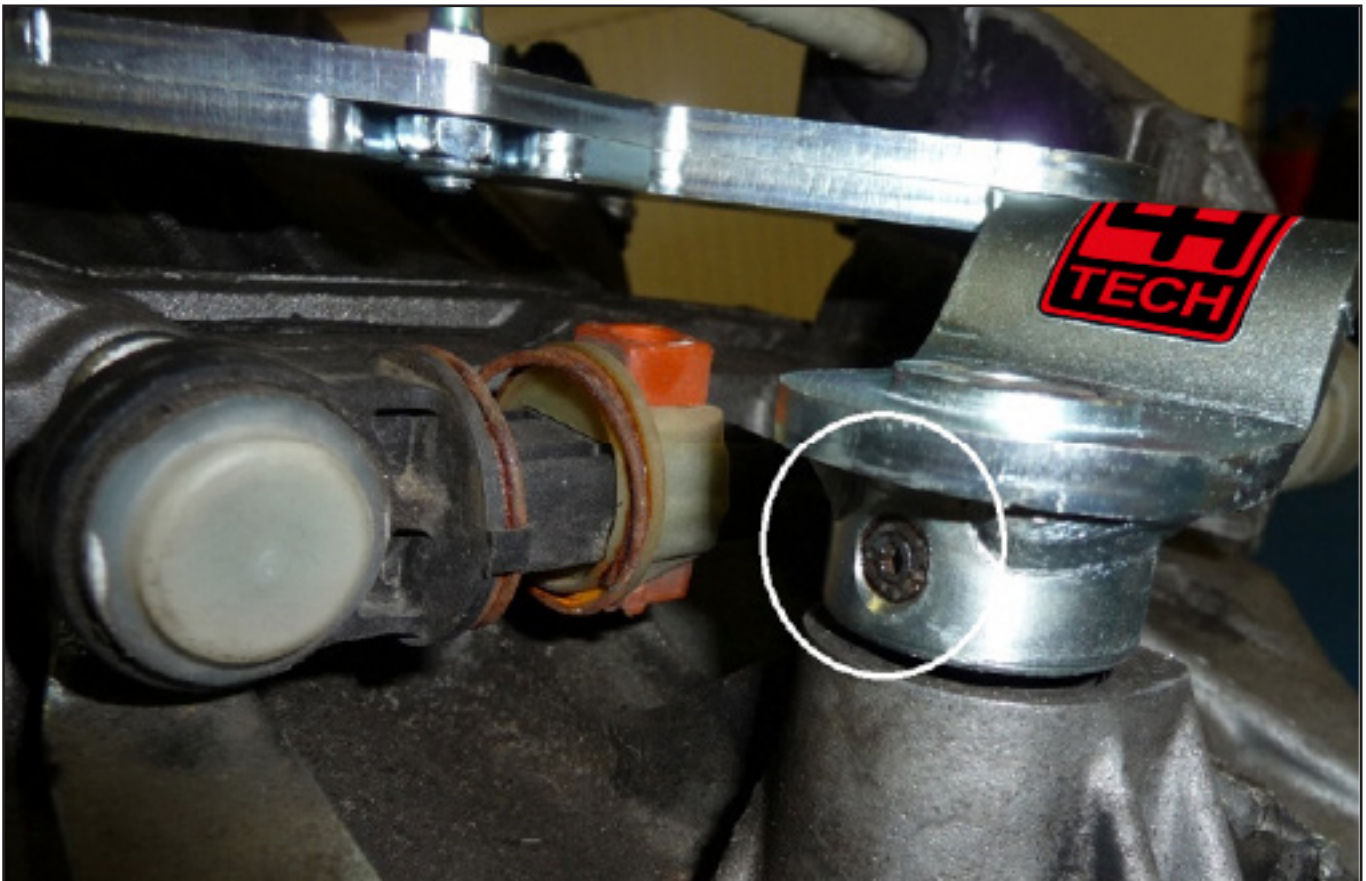
Tap the large pin in to the new Shifter arm for about 4mm.



Put the new Shifter arm on the gear selector shaft, and tap the pin through .



Take the small pin and tap it in the larger pin.

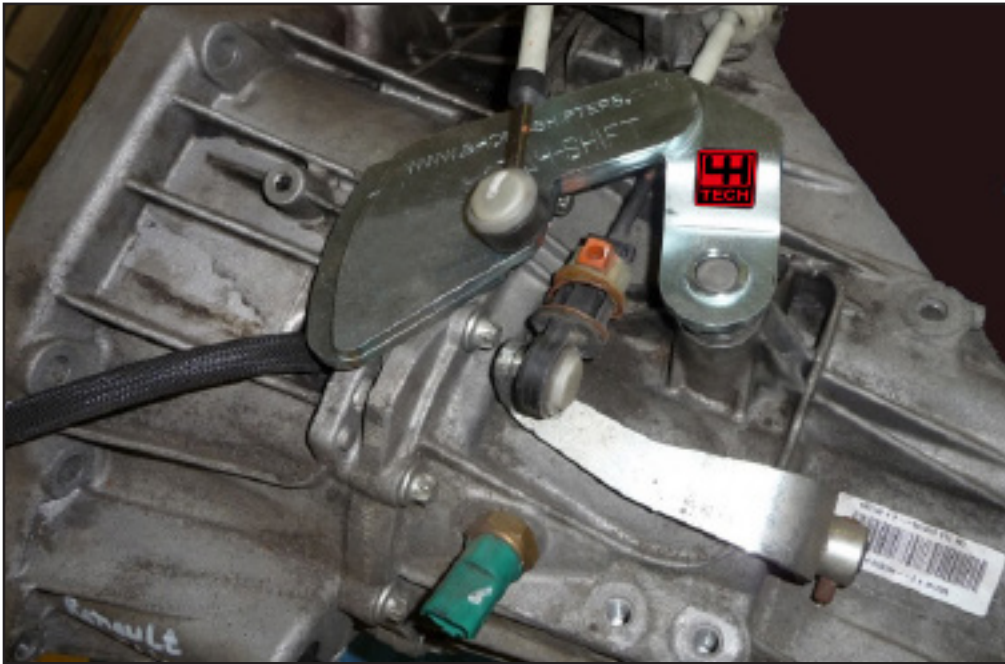




# SHORT-SHIFTERS.COM



Press the shift cable on the bolt head.



Fit back the battery tray, battery, air intake hose, and air filter housing.

Make a test drive and check if all gears can be engaged. Enjoy 30% less gear throw and that lovely ``Klick-klack`` feeling. Now your car shifts like a racecar, but always remember to be safe and don't get overly excited on the public roads out there.



**PROTECTED DESIGN!** This Short Shifter is 100% developed, tested and produced by 4H-Tech®, and is protected under international copyright, trademark and other laws.